

# Kameleon

FABRICS & FINISHES



**ASKÍA**  
ACOUSTIC PODS

# Class A Torino by Fidivi

**Composition**

100% Polyester Trevira CS

**Abrasion Resistance**

70.000 Martindale

**Fastness to light**

(ISO 105-B02) - 6 (blue scale)

**Fastness to rubbing**

(ISO 105-X12) - 4/5 (grey scale)

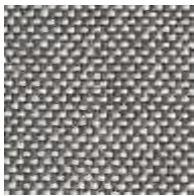
**Certification**

OEKO-TEX | Euflower - Ecolabel

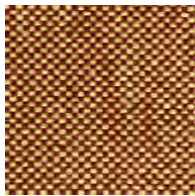
**Flammability**

C1 (UNI 9174 - UNI 8456)  
 M1 (NF P 92501-7)  
 B1 (DIN 4102)  
 AM 18 (NF D 60013)  
 CRIB 5 (BS 5852 part II)  
 EN 1021-1&2  
 BS 7176  
 IMO for upholstery Part 8  
 California TB 117  
 USA NFPA 701  
 USA NFPA 260  
 ONORM B 3825-Onorm A 3800-1 Class BI-QI-TRI  
 EN 13773  
 1 IM (UNI 9175)

www.fidivi.com



**A01**  
9201



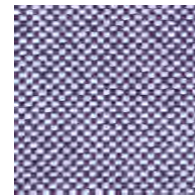
**A02**  
9302



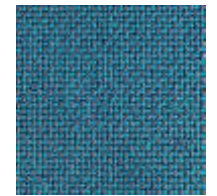
**A03**  
9306



**A04**  
9406



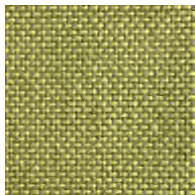
**A05**  
9501



**A06**  
9602



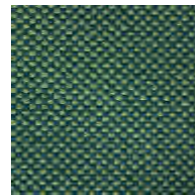
**A07**  
9616



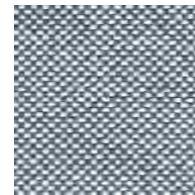
**A08**  
9702



**A09**  
9706



**A10**  
9717



**A11**  
9801

# Class A Jet by Fidivi

**Composition**

100% Polyester Trevira CS

**Abrasion Resistance**

65.000 Martindale

**Fastness to light**

(ISO 105-B02) - 6 (blue scale)

**Fastness to rubbing**

(ISO 105-X12) - 4/5 (grey scale)

**Certification**

OEKO-TEX | Euflower - Ecolabel

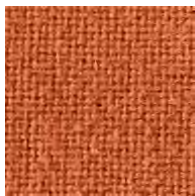
**Flammability**

C1 (UNI 9174 - UNI 8456)  
 M1 (NF P 92501-7)  
 B1 (DIN 4102)  
 AM 18 (NF D 60013)  
 CRIB 5 (BS 5852 part II)  
 EN 1021-1&2  
 BS 7176  
 IMO for upholstery Part 8  
 California TB 117  
 USA NFPA 701  
 USA NFPA 260  
 ONORM B 3825-Onorm A 3800-1 Class BI-QI-TRI  
 EN 13773  
 1 IM (UNI 9175)

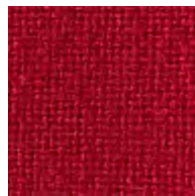
www.fidivi.com



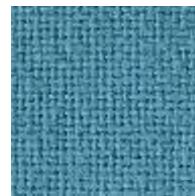
**A12**  
1006



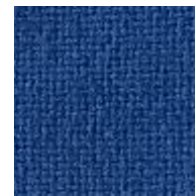
**A13**  
3036



**A14**  
4027



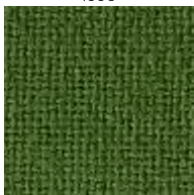
**A15**  
6007



**A16**  
6013



**A17**  
6014



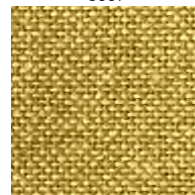
**A18**  
7025



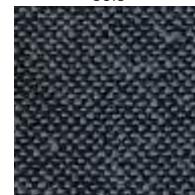
**A19**  
7041



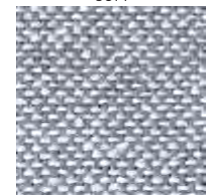
**A20**  
8009



**A21**  
9304



**A22**  
9281



**A23**  
9804

# Class A One by Fidivi

**Composition**  
100% polyester recycled

**Abrasion Resistance**  
100.000 Martindale

**Fastness to light**  
(ISO 105-B02) - 6

**Fastness to rubbing**  
(ISO 105-X12) - Wet 5 | Dry 5

**Certification**  
OEKO-TEX

**Flammability**  
1JM UNI 9175  
BS 7176  
California Technical Bulletin 117:2013  
CRIB 5 (BS 5852 PART II)  
EN 1021 - 1&2

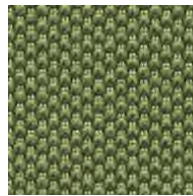
www.fidivi.it



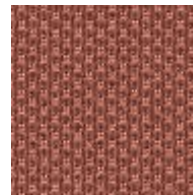
**A24**  
1006



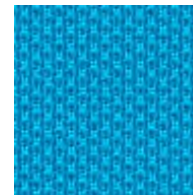
**A25**  
4030



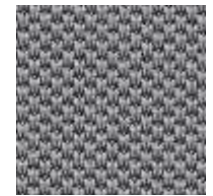
**A26**  
7521



**A27**  
4037



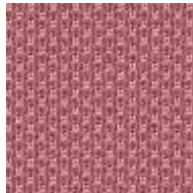
**A28**  
6091



**A29**  
8532



**A30**  
4028



**A31**  
4067



**A32**  
7026



**A33**  
3007

# Class C Lanee Melange by Chioccarello

**Composition**  
100% pure new wool

**Abrasion Resistance**  
50.000 Martindale

**Fastness to light**  
(ISO 105-B02) - 5

**Fastness to rubbing**  
(ISO 105-X12) - Wet 4/5 | Dry 5

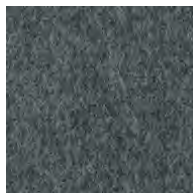
**Certification**  
OEKO-TEX

**Flammability**  
1JM UNI 9175  
BS EN 1021-1&2  
California Technical Bulletin 117:2013  
IMO - 2010 FTP CODE

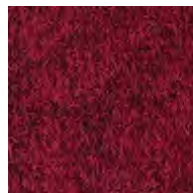
www.chioccarello.it



**C01**  
WM101



**C02**  
WM103



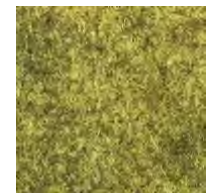
**C03**  
WM111



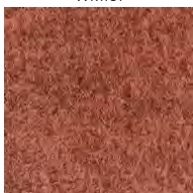
**C04**  
WM112



**C05**  
WM120



**C06**  
WM125



**C07**  
WM126



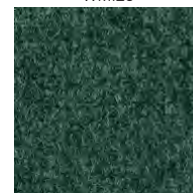
**C08**  
WM132



**C09**  
WM133



**C10**  
WM139



**C11**  
WM140



**C12**  
WM142

## Class C Aspect by Camira

### Composition

75% Trevira® CS Flame Retardant Polyester,  
25% Polyester. Non metallic dyestuffs

### Abrasion Resistance

Independently certified to >50.000 Martindale

### Fastness to light

(ISO 105-B02) - 5

### Fastness to rubbing

(ISO 105-X12) - Wet 4 | Dry 4

### Certification

OEKO-TEX Standard 100

### Flammability

BS EN 1021-1 Cigarette  
BS EN 1021-2 Match  
BS 7176 Low Hazard  
BS 5852 Ignition source 5 (over CMHR 50kg/m3 foam)  
BS 7176 Medium Hazard (over CMHR 50kg/m3 foam)  
DIN 4102 B1  
NF D 60-013 (Over 50kg/m3 CMHR foam)  
ÖNORM B 3825 & A 3800-1 (over CMHR 58kg/m3 foam)  
UNI 9175 Classe 1 IM

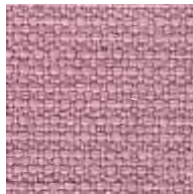
www.camirafabrics.com



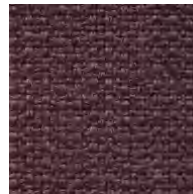
**C13**  
ACT01



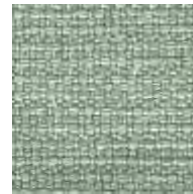
**C14**  
ACT03



**C15**  
ACT07



**C16**  
ACT09



**C17**  
ACT16



**C18**  
ACT18



**C19**  
ACT20



**C20**  
ACT23



**C21**  
ACT25



**C22**  
ACT29

## Class E Synergy by Camira

### Composition

95% Virgin Wool, 5% Polyamide

### Abrasion Resistance

Independently certified to >100.000 Martindale

### Fastness to light

(ISO 105-B02) - 5

### Fastness to rubbing

(ISO 105-X12) - Wet 4 | Dry 4

### Certification

EU Ecolabel | Indoor Advantage™ "Gold"

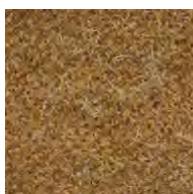
### Flammability

EN 1021 - 1&2 Cigarette & Match  
BS 7176 Low Hazard  
NF D 60-013  
ÖNORM B 3825 & A 3800-1 (58 kg/m3 CMHR Foam)  
UNI 9175 Classe 1 IM  
EN 13501-1 Adhered Class D, s1, d0  
EN 13501-1 Un-adhered Class E, s2, d0  
BS 5852 Ignition Source 5 when FR treated  
BS 7176 Medium Hazard when FR treated  
EN 13501-1 Adhered Class B, s1, d0 when FR treated  
EN 13501-1 Un-adhered Class D, s2, d0 when FR treated  
BS 5867-2: Type B Curtains & Drapes when FR treated

www.camirafabrics.com



**E01**  
LDS17



**E02**  
LDS22



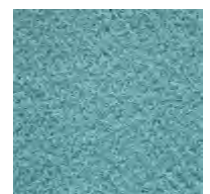
**E03**  
LDS28



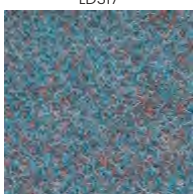
**E04**  
LDS37



**E05**  
LDS53



**E06**  
LDS55



**E07**  
LDS56



**E08**  
LDS57



**E09**  
LDS73



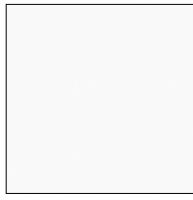
**E10**  
LDS84

# Chipboard

## Properties & Maintenance



**X01**  
U899 ST9



**X02**  
W1000 ST9



**X03**  
U830 ST9



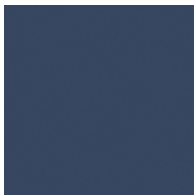
**X04**  
U732 ST9



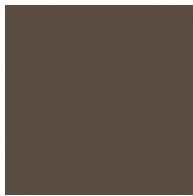
**X05**  
U630 ST9



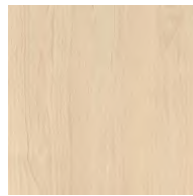
**X06**  
U311 ST9



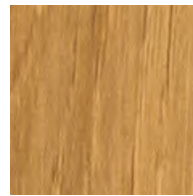
**X07**  
U504 ST9



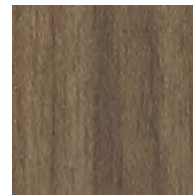
**X08**  
U748 ST9



**X09** Birch  
H1732 ST9



**X10** Oak  
H3395 ST12

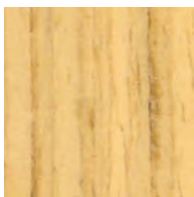


**X11** Walnut  
H1714 ST19

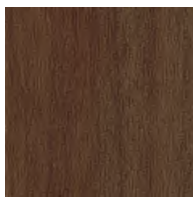
# Chipboard + Veneer

## Properties & Maintenance

Use a damp cloth to clean the entire surface. Use a microfiber cloth when dry dusting. Avoid direct sunlight and heat.



**Y01** Oak  
10.84



**Y02** Walnut  
10.16



**Y03** Ash  
60340/1306

# Plywood

## Properties & Maintenance

Use a damp cloth to clean the entire surface. Use a microfiber cloth when dry dusting. Avoid direct sunlight and heat.



**Z01** Pin



**Z02** Birch

# Special Finishes

## Properties & Maintenance

Use a damp cloth to clean the entire surface. Use a microfiber cloth when dry dusting. Avoid direct sunlight and heat.

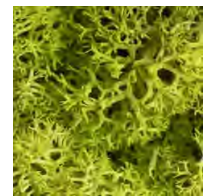


**W01**  
Cork Pinboard



**W02**  
HPL Whiteboard

# Green Wall



**V01** Moss  
Spring Green

# Antimicrobial Coating

## Metal parts - Properties & Maintenance

Use a damp cloth to clean the entire surface. Use a microfiber cloth when dry dusting. Avoid direct sunlight and heat.



**Satin Black**



**Satin White**

# Antimicrobial HPL

## Table tops - Properties & Maintenance

Use a damp cloth to clean the entire surface. Use a microfiber cloth when dry dusting. Avoid direct sunlight and heat.



**Black**  
HPL



**White**  
HPL

The material was challenged with the following test micro-organisms: Staphylococcus aureus ATCC 6538, Staphylococcus aureus ATCC 700698 (=MRSA), Pseudomonas aeruginosa ATCC 8739 und Salmonella enterica ssp. enterica NCTC 6017. After a 24h contact time, a germ reduction of more than 3.3 log<sub>10</sub> levels could be determined on the material for all test micro-organisms.

# Acoustic Felt

## Composition

100% polyester fiber (PET)

## Abrasion Resistance

(ISO 12947) - 2 100.000 Martindale

## Fastness to light

(ISO 105-B02) - 6

## Fastness to rubbing

(ISO 105-X12) - Wet 5 | Dry 4

## Shrinkage to dry cleaning

warp +/- 1% | weft 0%

## Noise Reduction Coefficient

(ISO 354:2003) NRC=0.80

## Average Absorption Coefficient

(ISO 354:2003) (100Hz-5000Hz): 0.78

## Thermal conductivity & resistance

(EN 12667:2001) conductivity 0.041 W/(mK)  
(EN 12667:2001) resistance 0.219 (m<sup>2</sup> K)/W

## Flammability

EN 13501-1:2007+A1:2009  
EN 13823:2010+A1:2004  
EN 11925-2:2010+Cor1:2011

EN 13823

FIGRA (W/s) - 9.3

LFS < edge of specimen - Yes  
THR600S (MJ) - 0.4  
SMOGRA (m<sup>2</sup>/s<sup>2</sup>) - 0.9  
TSP600S (m<sup>2</sup>) - 10.3  
Flaming particles or droplets - No

EN ISO 11925 - 2 Exposure 30s  
Fs ≤ 150mm - Yes  
Ignition of the filter paper - No

Fire behaviour B  
Smoke production 1  
Flaming droplets 0

BS 476 Part 7: 1997 No.1:2014 Class 1Y



Dark Grey

# Carpet

## Composition

Tufted velours 5/64" Frise, Plain

## Max. static resistance

EN 1815 Bl.2 < 2 KV

## Fastness to light

(ISO 105-B02) - mind. Note/ N./ min.note 5

## Fastness to rubbing

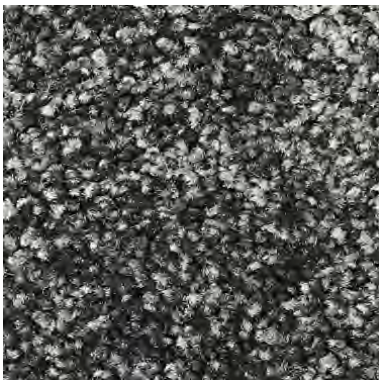
(ISO 105-X12) - mind. Note/ N./ min.note 4

## Impact noise insulation

EN ISO 10140 - ΔLw= ≥ 20 dB

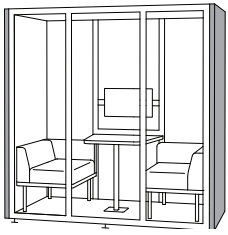
## Flammability

EN 13501-1 Cf1-s1(unglued or glued)

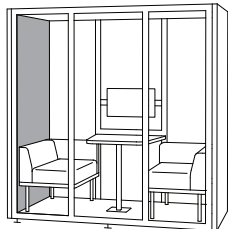


Grey  
A59845

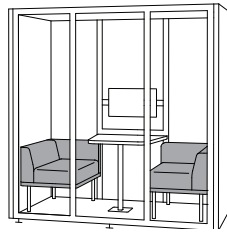
# Kameleon



Exterior Panel



Interior Panel



Seating Option

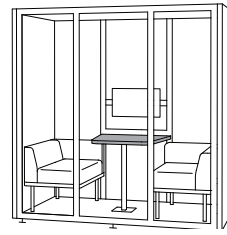
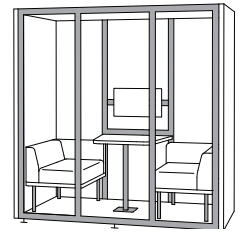


Table Top



Pod Colour

The Exterior panels come in different shapes, fabrics and finishes. Dark grey Acoustic Felt is the standard option for the Interior panels. The Interior panels can be covered in fabric. All tables are made from Pine Plywood with antimicrobial and anti fingerprint HPL top. You can choose from two Pod colours: Satin Black or Satin White. All metal parts such as pod frame, sofa legs, table leg... but also table tops, change colour depending on your Pod colour option.

## Exterior Panel



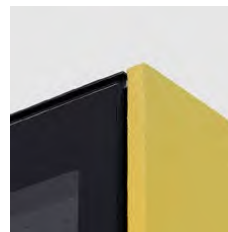
Round Horizontal



Round Vertical



Round Corners



Acoustic Felt + Fabric



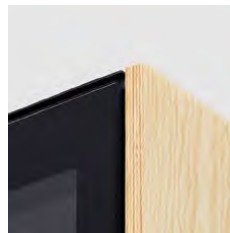
Chipboard + Fabric



Chipboard + Melamine



Chipboard + Veneer



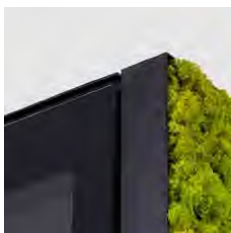
Plywood



Whiteboard



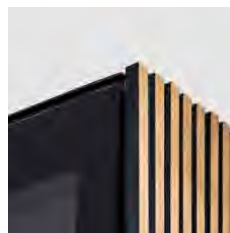
Cork Pinboard



Moss



Pegboard



Slats

## Interior Panel

## Seating Option

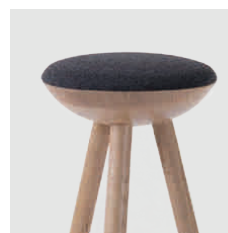
## Table Top



Acoustic Felt - Dark grey



Acoustic Felt + Fabric



The logo for ASKIA, featuring the word "ASKIA" in a bold, black, sans-serif font. The letter "K" is stylized with a diagonal slash through it.

Eliade Tower,  
Mircea Eliade No.18  
RO-Bucharest, 012015

T +40 212 121 381  
[contact@askiafurniture.ro](mailto:contact@askiafurniture.ro)

[www.askiafurniture.ro](http://www.askiafurniture.ro)