

# ONGO

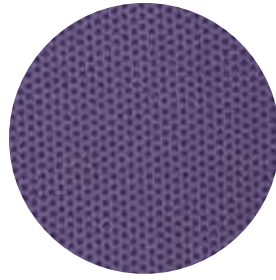


powered by

# KÖHL



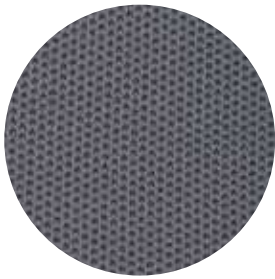
Schwarz / Black



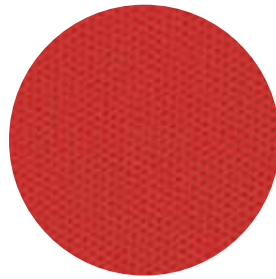
Lila / Violet



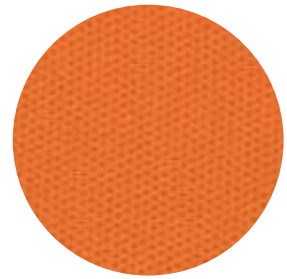
Braun / Brown



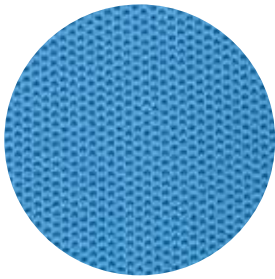
Grau / Grey



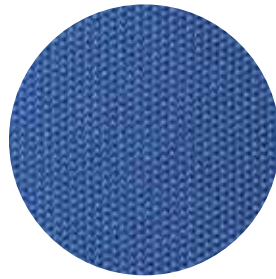
Rot / Red



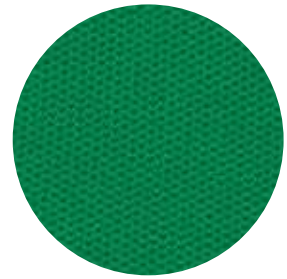
Orange / Orange



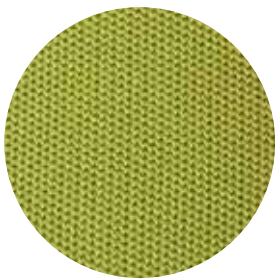
Hellblau / Light blue



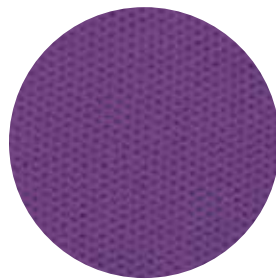
Blau / Blue



Grün / Green



Hellgrün / Light green



Purpur / Purple



Dunkelrot / Dark red

## Standardbezüge

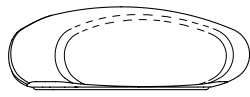
Polsterbezug in Gestrick

- Öko-Tex 100 Standard
- 97 % Polyester und 3 % Elasthan
- Farbechtheit nach Automobilstandard
- Scheuerfestigkeit: 40.000 Martindale
- Brandprüfung EN 1021-1/2

Das Reinigen des Gestricks kann mit milden, handelsüblichen Reinigungsmitteln erfolgen.



Classic Sitz / Classic seat  
(ONGO CLASSIC, ONGO ROLL)



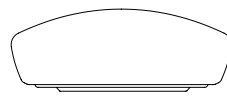
Triangel Sitz / Triangle seat  
(ONGO FREE, ONGO ROLL)

## Standard seat covers

Seat cushion in microfiber knit

- Öko-Tex standard 100
- 97 % polyester, 3 % spandex
- Color fastness according to automotive standard
- Abrasion resistance (40,000 cycles)
- Fire testing: EN 1021-1/2

The microfibre cover can be cleaned with a mild household detergent .



Hut Sitz / Hat seat  
(ONGO FREE)



Sattelsitz-Polster / Saddle seat pad  
(ONGO ROLL, ONGO STAND)

## Bezüge für Sattelsitz

Polsterbezug in Mikrofaservlies:

- 88 % Polyester und 12 % Polyurethan
- 70 % recyceltes Polyester
- Lichtechtheit: > 5
- Scheuerfestigkeit: > 50.000 Martindale

Die Reinigung des Mikrofaservlieses auf dem Sitzpolster des Sattelsitzes kann mit milden, handelsüblichen Reinigungsmitteln erfolgen. Bei starker Verschmutzung kann das gesamte Sitzpolster problemlos ausgetauscht werden.

## Covers for saddle seat

Seat cover in microfiber fleece:

- 88 % polyester and 12 % polyurethane
- 70 % recycled polyester
- Color fastness > 5
- Abrasion resistance > 50,000 Martindale

The microfiber fleece cover can be cleaned with mild household detergent. In case of severe stains, the cushion can be replaced very easily.



Schwarz / Black



Grau / Grey



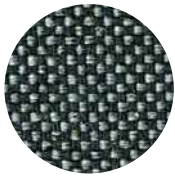
Hennarot / Henna

Für spezielle Einsatzbereiche (z.B. Labore, Kliniken, Pflegebereiche etc.) fertigen wir den Bezug des Sattelsitzes auch in einem SKAI Kunstleder.

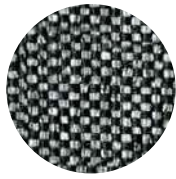
For special areas of use (e.g. laboratories, clinics, care areas, etc.) the cover of the saddle seat is also available in SKAI leatherette.

## RIVET

100% recyceltes Polyester | 100% recycled polyester



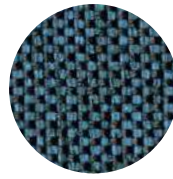
EGL37



EGL50



EGL01



EGL35



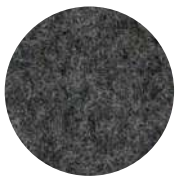
EGL23



EGL09

## BLAZER

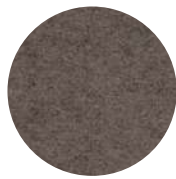
100% Schurwolle | 100% virgin wool



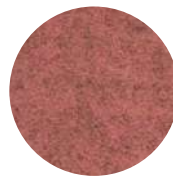
CUZ 30



CUZ 28



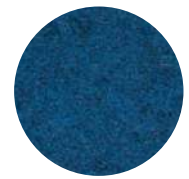
CUZ 31



CUZ 3P



CUZ 1K



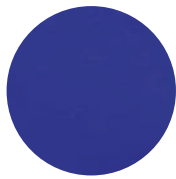
CUZ1W

## KUNSTLEDER | LEATHERETTE

veganes Leder | vegan leather



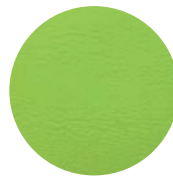
Schwarz / Black



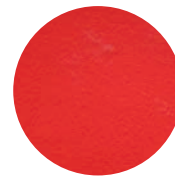
Blau / Blue



Grau / Grey



Hellgrün / Light green



Rot / Red



Weiß / White

## skai® EVIDA FIBER

Kunstleder aus 60% nachwachsenden Rohstoffen | Leatherette from 60% renewable natural resources



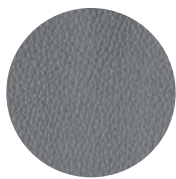
Ashgrey / Ash-grey

## LEDER | LEATHER

100% Rindsleder | 100% cow leather



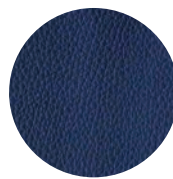
Schwarz / Black



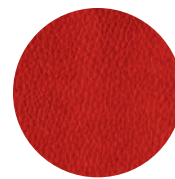
Grau / Grey



Braun / Brown



Blau / Blue



Rot / Red



Weiß / White

Unter Vorbehalt von Änderungen und Farbunterschieden · Subject to changes and color differences

# KÖHL

**KÖHL GmbH**

Paul-Ehrlich-Strasse 4  
63322 Rödermark | Germany  
T +49 6074 9280

[ongo@koehl.com](mailto:ongo@koehl.com)  
[koehl.com](http://koehl.com) | [ongo.eu](http://ongo.eu)

